



Wall air inlet »ZEW« Professional for all climate zones



»ZEW« Professional: Professional solution + savings on energy costs



NEW



The new universal wall air inlet »ZEW« Professional: One fresh air inlet for all stables.

Wall air inlet »ZEW« Professional in practice

With the new »ZEW« Professional fresh air inlet, the minimum fresh air rates can be orientated entirely towards the needs of the animals.

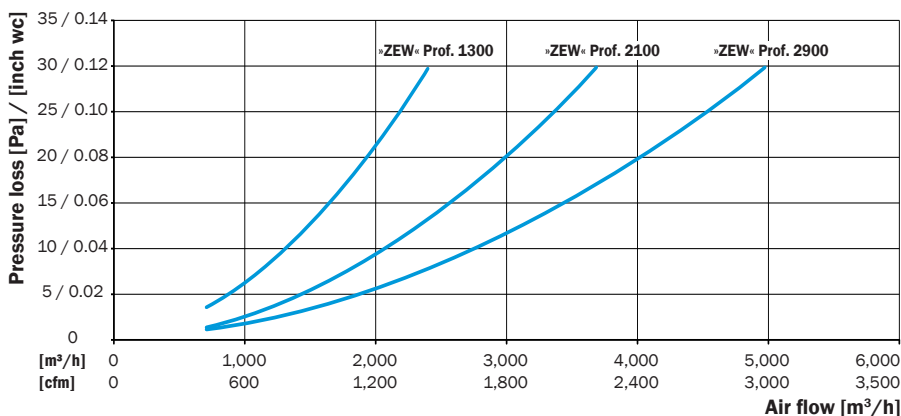
Especially at outside temperatures below -10 °C / 14 °F ice can form at the air intake of the inlet. In order to maintain the functionality despite this, the inlet shutter is moved via the control (so-called forced ventilation) for example. However, this results in very cold fresh

air from outside flowing into the stable, exceeding the air requirements of the animals.

This is precisely where the innovative »ZEW« Professional fresh air inlet from REVENTA® comes into play.

Through its unique geometry, the coming together of cold fresh air and moist warm stable air is displaced to areas in which no negative effects on functionality will occur.

Air capacity »ZEW« Professional with protective bird grid



Advantages:

- Significantly reduces the formation of ice even at extreme external temperatures
- Reduces energy costs massively by forgoing forced ventilation
- Spreads the temperature uniformly inside the stable, as the minimum air rate can be geared solely to the requirements of the animals.



I-Z010-0714E



Fresh air
-33 °C / -27,4 °F
Functionality
significantly
improved!

Wall air inlet »ZEW« Professional the plus for cold climate zones



Problem

Outside temperatures -33 °C / -27,4 °F: completely iced up = malfunction



Solution

Outside temperatures -33 °C / -27,4 °F: only mild ice formation = function assured

In the extreme climatic regions of Russia as well as during „hard winters“ in Germany, frozen fresh air inlets present major problems for livestock owners.

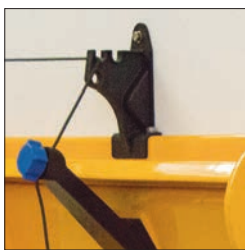
As such it has been exposed to extremes including outside temperatures of -33 °C / -27,4 °F in a broiler fattening stable in the Urals.

The results confirmed almost no ice formation. In advance of this, the »ZEW« Polar was subjected

to a range of tests under realistic conditions with temperature differences of 70 °C / 158 °F in our in-house climate chamber. The outstanding characteristics were also confirmed here. Freezing up is significantly reduced without having any negative effects on the air flows in the stable.

A comprehensive accessory range including protective bird grid, wind deflection hood, electric motor and special pulley incl. rope locking device complete the wall air inlet.

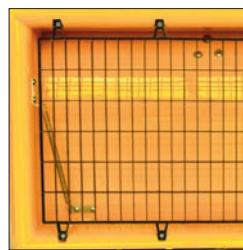
»Extras + accessories«



Pull rod wall guide



Air conduction sheet individually adjustable

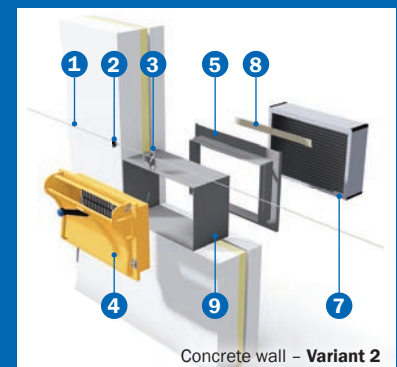


Bird protection grid

Accessories variants



Sandwich wall - Variant 1



Concrete wall - Variant 2

- 1 Pull rod
- 2 Pull rod clip
- 3 Pull rod wall guide
- 4 »ZEW« Professional 1.300, 2.100, 2.900
- 5 Flange*
- 6 Wind deflection hood
- 7 Light filter / Light filter wall mounting
- 8 Fastening rail light filter
- 9 Extension frame

* Deviations reserved

Type »ZEW« Professional	Air flow*						External dimensions without flange		Internal dimensions		External dimensions light filter		Pulling forces		Stroke way	
	wall air inlet only		with wind deflection hood + light filter		with wind deflection hood without light filter		mm	inch	mm	inch	mm	inch	N	lbf	mm	inch
	m³/h	cfm	m³/h	cfm	m³/h	cfm										
1300	2,000	1,200	1,800	1,100	1,900	1,120	555 x 295 x 104	21.85 x 11.61 x 4.09	500 x 250	19.69 x 9.84	765 x 682 x 372	30.11 x 26.85 x 14.64	25	5.62	390	15.35
2100	3,000	1,800	2,700	1,600	2,800	1,650	655 x 395 x 104	25.79 x 15.55 x 4.09	600 x 350	23.62 x 13.78	877 x 796 x 512	34.52 x 31.33 x 20.15	25	5.62	535	21.06
2900	4,000	2,400	3,600	2,200	3,700	2,170	725 x 482 x 104	28.54 x 18.98 x 3.93	667 x 428	26.26 x 16.85	958 x 893 x 624	37.71 x 35.15 x 24.56	25	5.62	635	25.00

*Air flow at 20 [Pa] / 0.08 [inch wc]

Do you have any questions or do you require advice concerning your own projects? – We shall be happy to assist you:

REVENTA GmbH & Co. KG | Im Gewerbegebiet 3 | D-48612 Horstmar | Phone: +49 (0) 25 58 / 93 92 0 | www.reventa.de