

**SALMET®**

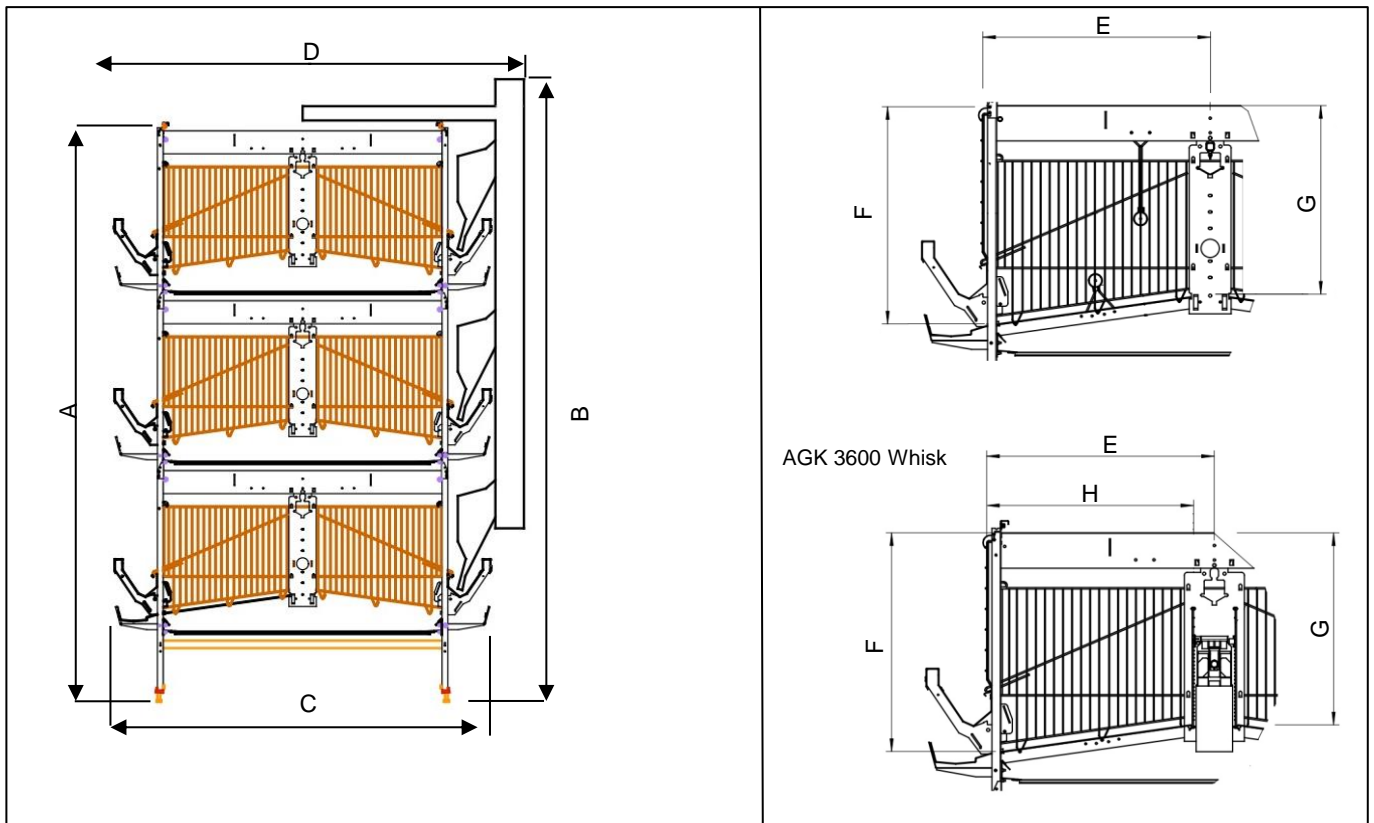
*... for your success!*

# SALMET - AGK 3600-625



... for your success!

## SALMET - AGK 3600-625



Tiers	Row Height (without catwalk)			
	Feed Chain (A)		Feed Hopper (B)	
3	2437 mm	95,94 "	2620 mm	103,15 "
4	3152 mm	124,09 "	3335 mm	131,30 "
5	3867 mm	152,24 "	4050 mm	159,45 "
6	4582 mm	180,39 "	4765 mm	187,60 "
7	5297 mm	208,54 "	5480 mm	215,75 "
8	6012 mm	236,69 "	6195 mm	243,90 "
9	6727 mm	264,84 "	6910 mm	272,05 "
10	7442 mm	292,99 "	7625 mm	300,20 "
11	8157 mm	321,14 "	8340 mm	328,35 "
12	8872 mm	349,29 "	9055 mm	356,50 "

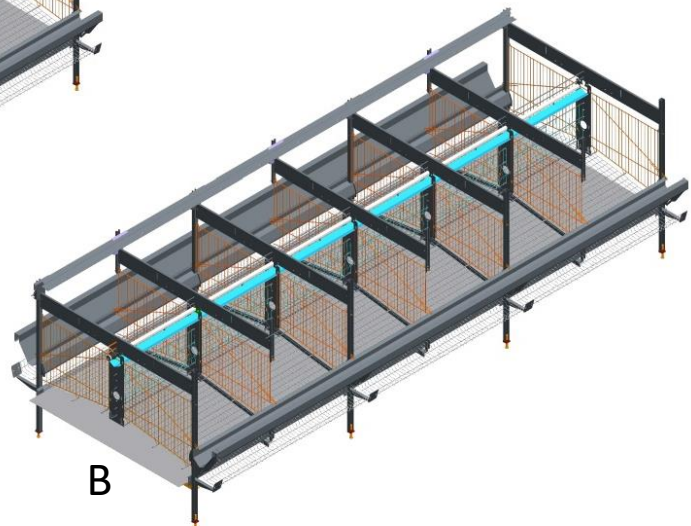
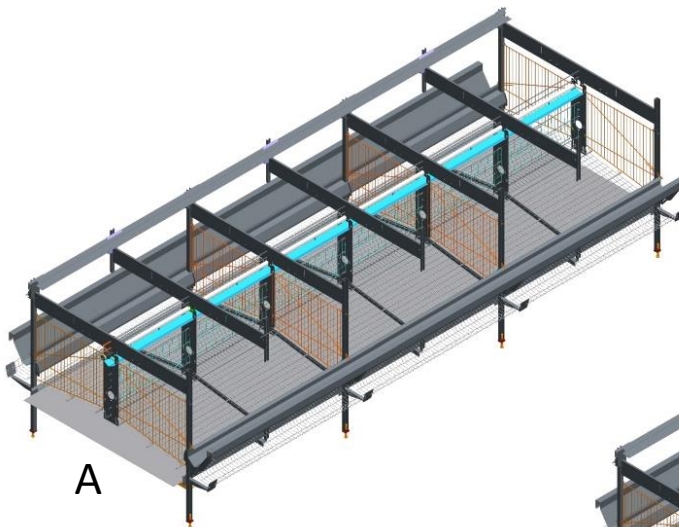
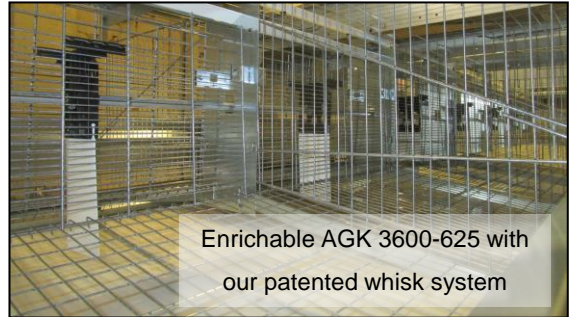
	AGK 3600-625		AGK 3600-625 Whisk	
Depth (E)	625 mm	24,6 "		
Max. Cage Height (F)	600 mm	23,6 "	600 mm	23,6 "
Min. Cage Height (G)	518 mm	20,4 "	527 mm	20,7 "
Depth to Rear Partition (H)			568,5 cm	22,4 "

	Cage Width			
	Trough to Trough (C)		Feed Hopper to Feed Hopper (D)	
Feed Hopper	1584 mm	62,36 "	1892 mm	74,49 "
Feed Chain	1608 mm	63,31 "		

... for your success!

## SALMET - AGK 3600-625

Enrichable



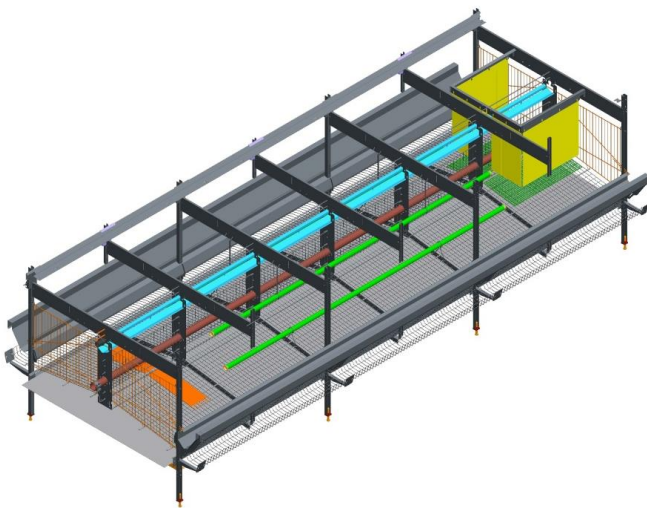
	Enrichable (A)		Enrichable (B)		AGK 3600-625 Whisk	
Length	1200 mm	47,2 "	600 mm	23,6 "	1200 mm	47,2 "
Depth (E)	625 mm	24,6 "	625 mm	24,6 "		
Compartment Area *	7500 cm <sup>2</sup>	1162,5 in <sup>2</sup>	3750 cm <sup>2</sup>	581,3 in <sup>2</sup>		
Max. Cage Height (F)	600 mm	23,62 "	600 mm	23,62 "	600 mm	23,6 "
Min. Cage Height (G)	518 mm	20,39 "	518 mm	20,39 "	527 mm	20,7 "
Depth to Rear Partition (H)					568,5 cm	22,4 "
Compartment Area *					6822 cm <sup>2</sup>	1057,4 in <sup>2</sup>

\* depending on local regulation

... for your success!

## SALMET - AGK 3600-625

### Fully Enriched



Available with our patented whisk system

	Fully Enriched			
	AGK 3600-625		AGK 3600-625 Whisk	
Length	3600 mm	141,7 "	3600 mm	141,7 "
Depth (E)	625 mm	24,6 "	625 mm	24,6 "
Compartment Area *	22500 cm <sup>2</sup>	3487,5 in <sup>2</sup>	22500 cm <sup>2</sup>	3487,5 in <sup>2</sup>
Max. Cage Height (F)	600 mm	23,6 "	600 mm	23,6 "
Min. Cage Height (G)	518 mm	20,4 "	527 mm	20,7 "
Depth to Rear Partition (H)			568,5 cm	22,4 "
Compartment Area *			20466 cm <sup>2</sup>	3172,2 in <sup>2</sup>
Nest Area	344 cm <sup>2</sup>	53,4 in <sup>2</sup>		
Floor Space/ Bird	750 cm <sup>2</sup>	116,3 in <sup>2</sup>		
Feeding Space/ Bird	12 cm	4,7 "		
Perch Space/ Bird	15,2 cm	6,0 "		
Number of Birds**	30			

\* depending on local regulation

\*\* according to European Directive 1999/74/EC

Technical details are subject to change 2016

